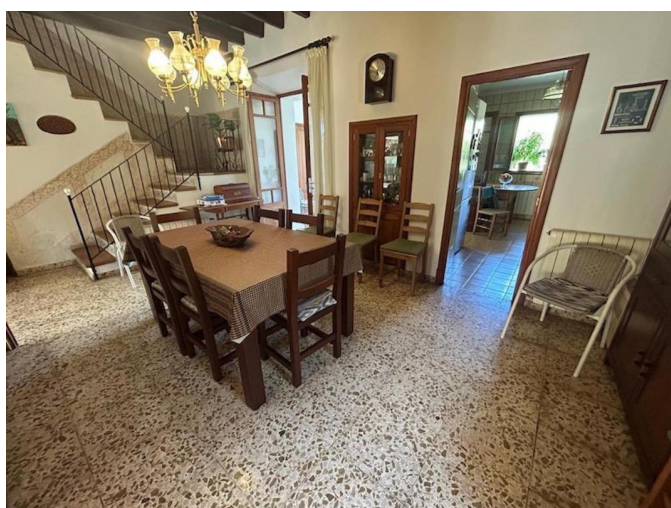


SO1840 - Village House with Garden on the Outskirts of Sóller



Category:	Sales
Location:	Sóller
Property type:	House
Constructed area:	ca. 236 m2
Garden:	ca. 150 m2
Bedrooms:	5
Bathrooms:	2
Livingrooms:	1

1.200.000 €

This house has a total of 236 m² spread over three floors. The ground floor, about 98 m², welcomes you with a spacious entrance leading to a large dining room with a wood-burning stove and a living room. There is also a full bathroom and a fully equipped, recently renovated kitchen. On this floor, there is a small enclosed terrace that leads to the large rear garden, which features a small outbuilding, its own water well, and a pond.

On the first floor (66 m²), you'll find a second full bathroom, three double bedrooms, and a terrace with incredible views of the Tramuntana mountains.

The top floor features about 72 m² of covered porches with great potential, offering countless possibilities. The house is in very good condition and is equipped with central oil heating. It is located in a very quiet and sunny area near the beautiful village of Biniaraix.