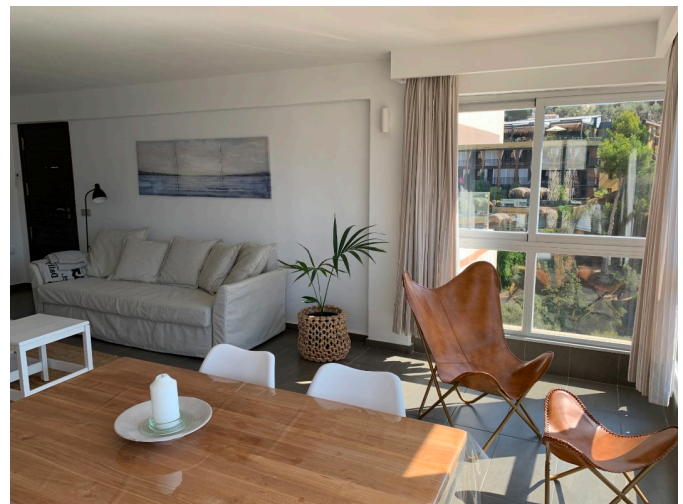


PS2404 - Apartment with impressive views to the bay and mountains - Reg. 928036P



Category: Holiday rental
Location: Port de Sóller
Property type: Apartment
Bedrooms: 1
Bathrooms: 1
Livingrooms: 1
Energy Certificate: Yes - E

840 - 1.050 €

Sitting in elevated position of a small community of apartments in Cami des Cingle you find this lovely inviting apartment . The access is over a number of row of stairs !!! which is not ideal for disabled people, but definately worth the effort . The spacious living room offers an amazing overlook of the bay of Port de Sóller. Opening the glass front windows you recieve the feeling of beeing on a covered terrace, enjoying the breeze of the sea! Next to this apartment there is no other that visually can intimate your privacy . There is one double bedroom (160x200 bed) , shower bathroom, kitchen with small dishwasher, washing machine, Nespresso coffee maker, toaster and kettle. There is an electric cooker and microwave , but no oven. both living room and bedroom are equipped with AC hot and cold should you need it. There is further WIFI, Smart TV and all items you might need to spend an enjoyable stay in a perfect location. All the bars, restaurants, shops, and the beach are in less than 5 minutes walking distance and first ones just down the slope of the street.