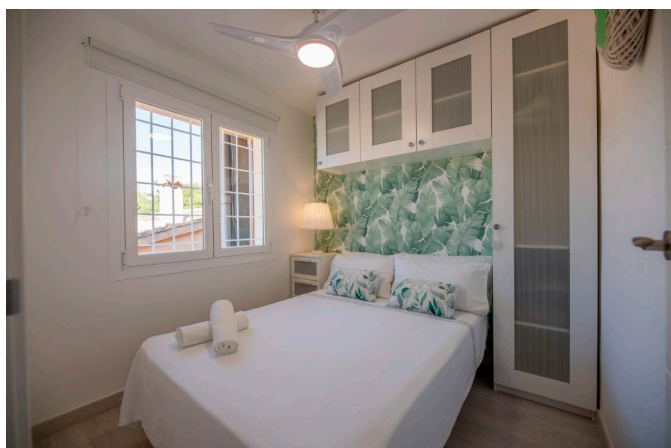


PS2223 - Apartment close to the beach in Port de Sóller - Reg. ETVPL/14081



Category:	Holiday rental
Location:	Port de Sóller
Property type:	Apartment
Constructed area:	ca. 70 m2
Terrace:	ca. 16 m2
Bedrooms:	2
Bathrooms:	1
Livingrooms:	1
Energy Certificate:	Yes - E

This modern renovated flat impresses with its location, only a few steps away from the beach of Port de Sóller. Once you have climbed the stairs to the 4th floor you are rewarded with a fantastic view of the historic finca of Hotel Es Port, as well as the surrounding mountains of the Tramuntana. The flat has two bedrooms, one of which has a BRIMNES IKEA extendable bed and the smaller bedroom has a double bed of 150x200. The kitchen is very well equipped including washing machine and dishwasher. The bathroom has a shower. The living area is bright and friendly with WIFI and TV and leads directly onto the covered terrace, probably the most used space in this small flat. Terrace big enough to enjoy breakfast or simply round off the evening with a glass of wine. There is air conditioning in the living area and ceiling fans in the bedrooms. This flat is a perfect base for both beach holidaymakers and hikers.

1.250 €