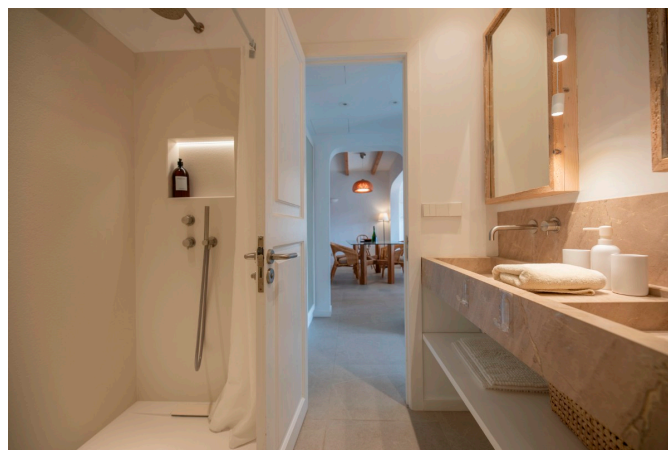


PS2042 - Charming apartment with harbour view in hillside location in Port de Sóller - Reg. ETVPL/14544



Category: Holiday rental

Location: Port de Sóller

Property type: Apartment

Bedrooms: 2

Bathrooms: 1

Livingrooms: 1

1.600 €

This light and charming apartment is located just above the Port de Sóller with fantastic distance views to mountains and the harbour. The property offers two bedrooms, one of which has two single beds and the master bedroom has a double bed with access out to the terrace. There is further one bathroom with bathtub (shower over) and a fully and well equipped kitchen with washing machine, oven and hob, microwave. The spacious living room with closed fire place is divided in dining area and relax area with two sofas and TV with German/ Spanish television and two English channels. All in all a very beautiful property to enjoy, with great views from the living room and the covered terrace. Internet and A/C